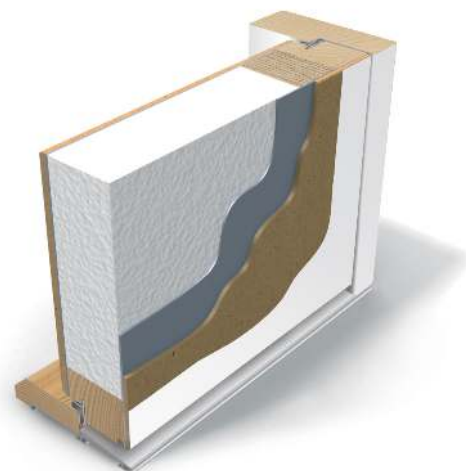


Outward opening external door with 1-sealing.

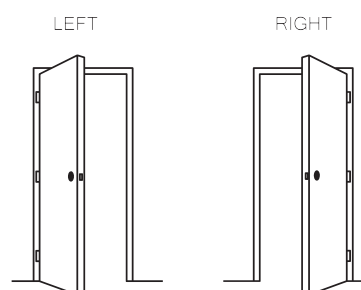
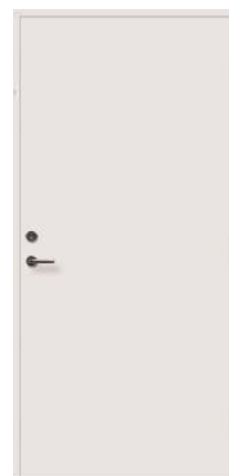
Sound insulation	26dB without glass 28dB with glass
Water tightness	Class 7B
Air permeability	Class 4
Resistance to wind load	Class C3
Thermal transmittance	0.77 W/m ² K without glass 1.0 W/m ² K with glass



EA01

TECHNICAL DATA

Size	one sided M9-10 x M20-21 can be produced as a double-sided
Door leaf	thickness 62mm
Frame	pine, depth 105mm
Threshold	oak-aluminium, height 25mm
Locking system	lock case ASSA 565 and striking plate 0094
Hinges	plate hinges 3248
Finishing	white (S 0502-Y), special color or teak veneer
Glass	clear, diamante, cotzwold or satinovo
Extras	locks from different manufacturers, stainless steel kick plate, door closer, door eye, doorbell, moldings and / or shields



It is possible to get special solutions. More information from the representative.



	H	B	W	A	A1	A2
M9			890	825	802	740
M10			990	925	902	840
M20	1989	1940				
M21	2089	2040				

EA01

